



Recombinant Human IL-2

Catalog #	EPT011
Expression Host	E.coli
DESCRIPTION	Recombinant Human Interleukin-2 is produced by our E.coli expression system and the target gene encoding Ala21-Thr153 is expressed.
Accession	P60568
Synonyms	Interleukin-2; IL-2; T-Cell Growth Factor; TCGF; Aldesleukin; IL2
Mol Mass	15.5 KDa
AP Mol Mass	14 KDa, reducing conditions
Purity	Greater than 95% as determined by reducing SDS-PAGE.
Endotoxin	Less than 0.001 ng/ μ g (0.01 EU/ μ g) as determined by LAL test.
FORMULATION	Lyophilized from a 0.2 μ m filtered solution of 10mM sodium citrate, pH 4.0.
RECONSTITUTION	Always centrifuge tubes before opening. Do not mix by vortex or pipetting.





It is not recommended to reconstitute to a concentration less than 100µg/ml.

Dissolve the lyophilized protein in distilled water.

Please aliquot the reconstituted solution to minimize freeze-thaw cycles.

SHIPPING

The product is shipped at ambient temperature.

Upon receipt, store it immediately at the temperature listed below.

STORAGE

Lyophilized protein should be stored at $< -20^{\circ}\text{C}$, though stable at room temperature for 3 weeks.

Reconstituted protein solution can be stored at $4-7^{\circ}\text{C}$ for 2-7 days.

Aliquots of reconstituted samples are stable at $< -20^{\circ}\text{C}$ for 3 months.

BACKGROUND

Interleukin-2(IL-2) is an interleukin, a type of cytokine signaling molecule in the immune system, belongs to the IL-2 family. It is a powerful immunoregulatory lymphokine produced by T-cells in response to antigenic or mitogenic stimulation. IL-2/IL-2R signaling is required for T-cell proliferation and other fundamental functions that are essential for the immune response. IL-2 stimulates growth and

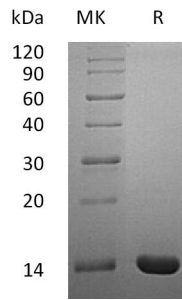




ELK Biotechnology

differentiation of B-cells, NK cells,
lymphokine-activated killer cells, monocytes,
macrophages and oligodendrocytes.

SDS-PAGE



+86-27-59760950

ELKbio@ELKbiotech.com

www.elkbiotech.com

23-2, No.388 Gaoxin 2nd Road, Wuhan East Lake Hi-tech Development Zone, Hubei, P.R.C