



ELK Biotechnology

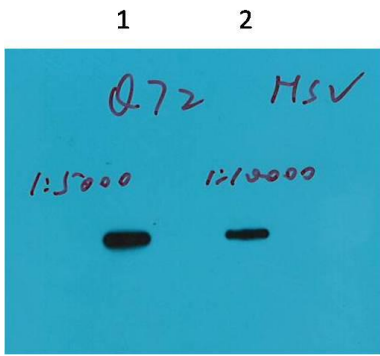
HSV-Tag Mouse mAb

Catalog NO.: EM1113

For research use only.

Overview

Product name	HSV-Tag Mouse Monoclonal antibody
Source	Mouse
Applications	WB
Species reactivity	N/A
Recommended dilutions	WesternBlot:1/5000-10000 NOTE: Optimal dilutions should be determined by the end user.
Immunogen	Synthetic Peptide
Species	N/A
Storage	PBS with 0.02% sodium azide and 50% glycerol pH 7.4. Store at -20° C. Avoid repeated freeze-thaw cycles.
Isotype	IgG1
Clonality	Monoclonal
Concentration	1 mg/ml
Observed band	N/A
GeneID (Human)	N/A
Human Swiss-Prot No.	N/A
Cellular localization	N/A
Alternative Names	N/A
Background	HSV-tag peptide QPELAPEDPED conjugated to KLH. HSV- Tag antibody can recognize C-terminal internal and N-terminal HSV-tagged proteins.



Western blot analysis of Recombinant protein with HSV Mouse mAb(Q72) diluted at: 5000 2):10000