



# ELK Biotechnology

EFHD1 Mouse mAb

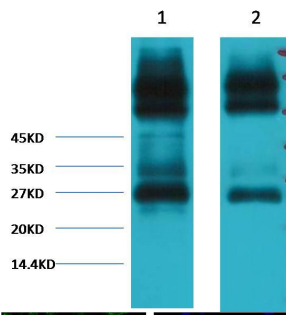
Catalog NO.: EM1085

For research use only.

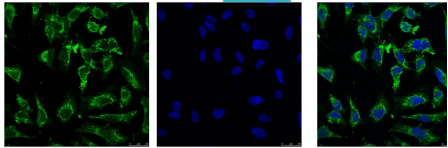
## Overview

---

Product name	EFHD1 Mouse Monoclonal antibody
Source	Mouse
Applications	<b>WB IF</b>
Species reactivity	<b>Human Rat Mouse</b>
Recommended dilutions	<b>WesternBlot:1/2000</b> <b>Immunofluorescence:1/100-200</b> <b>NOTE: Optimal dilutions should be determined by the end user.</b>
Immunogen	Synthetic Peptide
Species	Human
Storage	PBS with 0.02% sodium azide and 50% glycerol pH 7.4. Store at -20° C. Avoid repeated freeze-thaw cycles.
Isotype	IgG1
Clonality	Monoclonal
Concentration	1 mg/ml
Observed band	<b>27kDa</b>
GenelD (Human)	80303
Human Swiss-Prot No.	Q9BUP0
Cellular localization	Membrane Mitochondrion Mitochondrion inner membrane
Alternative Names	MST133 MSTP133 PP3051 Swiprosin 2 SWS2
Background	EFHD1 is an EF-hand domain-containing protein that displays increased expression during neuronal differentiation.



Western blot analysis of 1) Mouse spleen tissue 2) Rat spleen tissue with EFHD1 Mouse mAb diluted at:3000.



IF analysis of HeLa with EM1085(Left) and DAPI (Right) diluted at:100