



# ELK Biotechnology

CK8 Mouse mAb

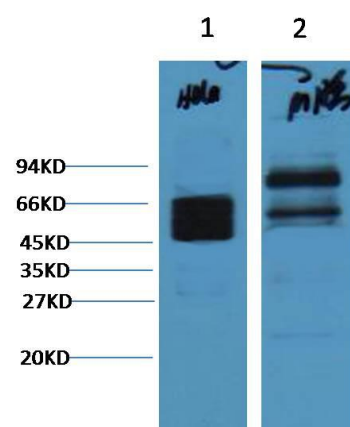
Catalog NO.: EM1055

For research use only.

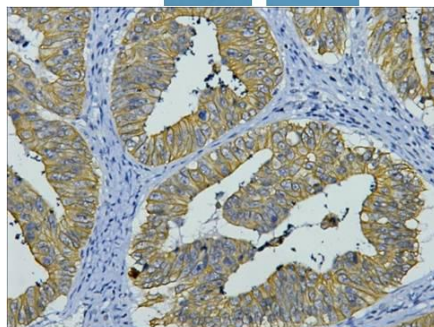
## Overview

---

Product name	CK8 Mouse Monoclonal antibody
Source	Mouse
Applications	<b>WB IHC</b>
Species reactivity	<b>Human Rat Mouse</b>
Recommended dilutions	<b>WesternBlot:1/2000-5000</b> <b>Immunohistochemistry:1/200</b> <b>NOTE: Optimal dilutions should be determined by the end user.</b>
Immunogen	Synthetic Peptide
Species	Human
Storage	PBS with 0.02% sodium azide and 50% glycerol pH 7.4. Store at -20° C. Avoid repeated freeze-thaw cycles.
Isotype	IgG1
Clonality	Monoclonal
Concentration	1 mg/ml
Observed band	<b>54kDa</b>
GenelD (Human)	3856
Human Swiss-Prot No.	P05787
Cellular localization	Cytoplasm. Nucleus nucleoplasm. Nucleus matrix.
Alternative Names	CARD2 CYK8 Cytokeratin 8 K2C8 K8 keratin 8 KO KRT8 Type II keratin Kb8
Background	Cytokeratin 8 belongs to the type B (basic) subfamily of high molecular weight keratins and exists in combination with cytokeratin8. Cytokeratin 8 is primarily found in the non squamous epithelia and is present in majority of adenocarcinomas and ductal carcinomas. It is absent in squamous cell carcinomas.



Western blot analysis of) Hela 2) Mouse Brain with CK8 mAb diluted at:4000.



IHC staining of human colon cancer tissue with CK8 mouse mAb(8G8) diluted at:200.