



ELK Biotechnology

CD23 Mouse mAb

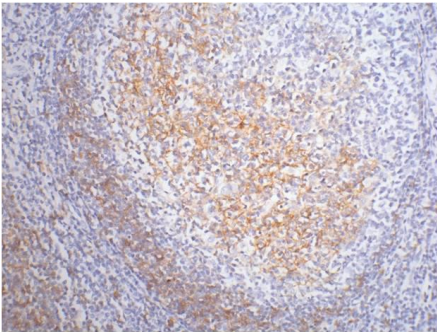
Catalog NO.: EM1049

For research use only.

Overview

Product name	CD23 Mouse Monoclonal antibody
Source	Mouse
Applications	IHC
Species reactivity	Human Rat Mouse
Recommended dilutions	Immunohistochemistry:1/200 NOTE: Optimal dilutions should be determined by the end user.
Immunogen	Synthetic Peptide
Species	Human
Storage	PBS with 0.02% sodium azide and 50% glycerol pH 7.4. Store at -20° C. Avoid repeated freeze-thaw cycles.
Isotype	IgG1
Clonality	Monoclonal
Concentration	1 mg/ml
Observed band	283849kDa
GeneID (Human)	2208
Human Swiss-Prot No.	P06734
Cellular localization	Cell membrane. Secreted
Alternative Names	BLAST 2 CD23A CLEC4J Fc epsilon RII FCE2 FCER2 IGEBF Lymphocyte IgE receptor
Background	The CD23 antigen is the low affinity IgE Fc receptor which is a 49 kDa protein with 38 and 28 kDa fragments. It is expressed on most mature conventional B cells and can also be found on the surface of T cells macrophages platelets and EBV transformed B lymphoblasts. Expression of CD23 has been detected in neoplastic cells from cases of B cell chronic Lymphocytic leukemia. CD23 is expressed by B cells in the follicular mantle but not by proliferating germinal centre cells. CD23 is also expressed by

eosinophils.



IHC staining of Human tonsil tissue paraffin-embedded with CD23 mouse mAb (1E9) diluted at:200.